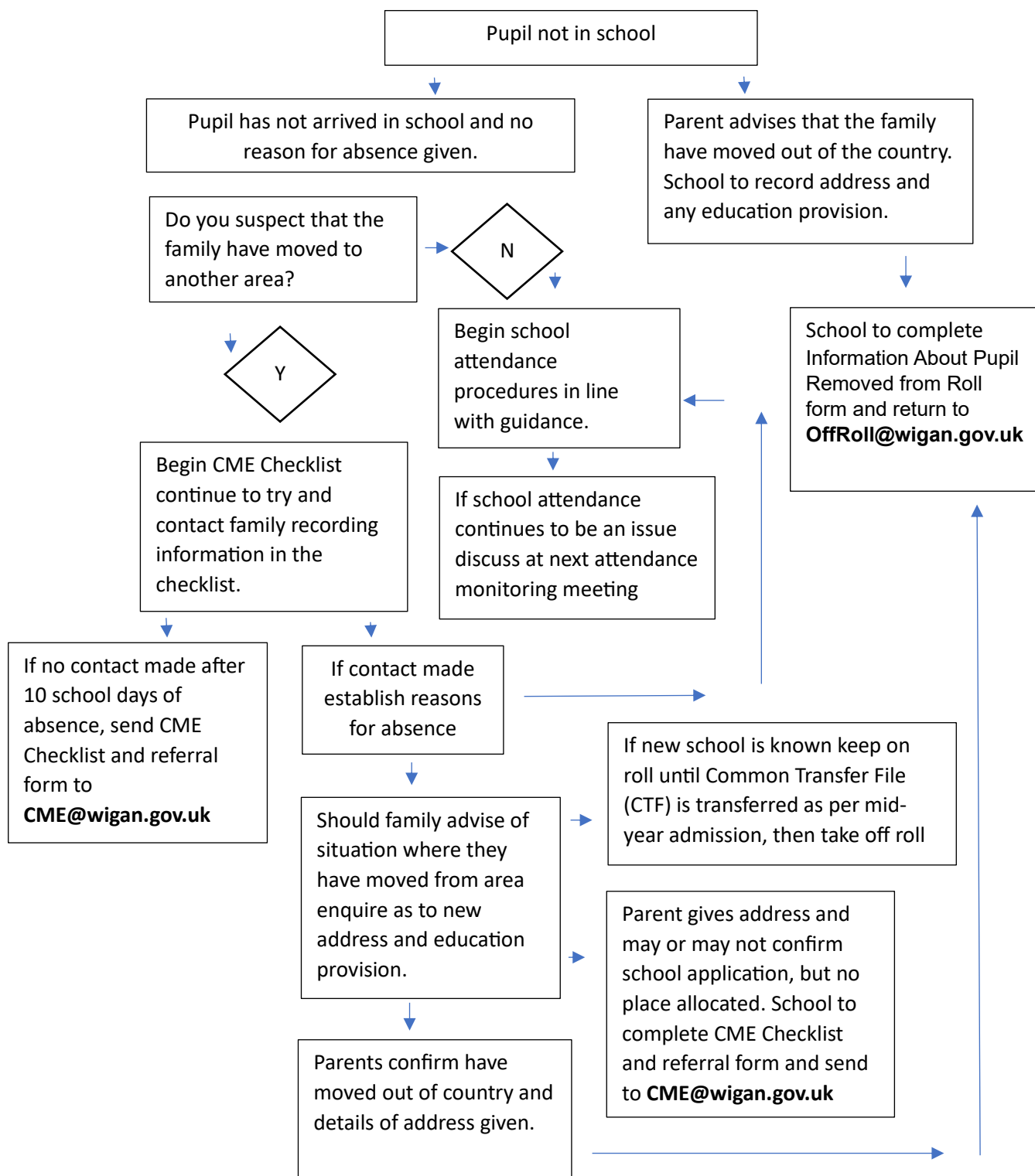


Change to off roll notifications from schools as of Autumn 23-24

Taking Pupils Off Roll

Pupils should only be taken off school roll outside of standard transition times if the criteria is met as per the grounds set out in the Education (Pupil Registration) (England) Regulations 2006 (see below). Should a pupil be deleted as per these grounds the local authority must be informed using the referral form 'Information About Pupil Removed from Roll' (see below). The below flowchart helps differentiate where a situation is either an attendance issue, a child missing education or a situation where a pupil can be removed from roll and subsequently referred to the local authority.



Information About Pupil Removed from Roll

Full Name of Pupil	
Date of Birth of Pupil	
Parent(s) Name(s)	
Parent telephone number	
Parent Email Address	
Current Address	
Future Address if different to above	
Information about school or education provision if known	
Regulation 8 Ground under which removed	

When complete return to OffRoll@wigan.gov.uk

**Grounds for deleting a pupil from the school admission register
Grounds for deleting a pupil of compulsory school age from the school admission register set out in the Education (Pupil Registration) (England) Regulations 2006, as amended.**

1	8(1)(a) - where the pupil is registered at the school in accordance with the requirements of a school attendance order, that another school is substituted by the local authority for that named in the order or the order is revoked by the local authority on the ground that arrangements have been made for the child to receive efficient full-time education suitable to his age, ability and aptitude otherwise than at school.
2	8(1)(b) - except where it has been agreed by the proprietor that the pupil should be registered at more than one school, in a case not falling within sub-paragraph (a) or regulation 9, that he has been registered as a pupil at another school.
3	8(1)(c) - where a pupil is registered at more than one school, and in a case not falling within sub-paragraph (j) or (m) or regulation 9, that he has ceased to attend the school and the proprietor of any other school at which he is registered has given consent to the deletion.
4	8(1)(d) - in a case not falling within sub-paragraph (a) of this paragraph, that he has ceased to attend the school and the proprietor has received written notification from the parent that the pupil is receiving education otherwise than at school.
5	8(1)(e) - except in the case of a boarder, that he has ceased to attend the school and no longer ordinarily resides at a place which is a reasonable distance from the school at which he is registered.
6	8(1)(f) - in the case of a pupil granted leave of absence in accordance with regulation 7(1A), that — (i) the pupil has failed to attend the school within the ten school days immediately following the expiry of the period for which such leave was granted; (ii) the proprietor does not have reasonable grounds to believe that the pupil is unable to attend the school by reason of sickness or any unavoidable cause; and (iii) the proprietor and the local authority have failed, after jointly making reasonable enquiries, to ascertain where the pupil is.
7	8(1)(g) - that he is certified by the school medical officer as unlikely to be in a fit state of health to attend school before ceasing to be of compulsory school age, and neither he nor his parent has indicated to the school the intention to continue to attend the school after ceasing to be of compulsory school age.
8	8(1)(h) - that he has been continuously absent from the school for a period of not less than twenty school days and — 21 Grounds for deleting a pupil of compulsory school age from the school admission register set out in the Education (Pupil Registration) (England) Regulations 2006, as amended (i) at no time was his absence during that period authorised by the proprietor in accordance with regulation 6(2); (ii) the proprietor does not have reasonable

	grounds to believe that the pupil is unable to attend the school by reason of sickness or any unavoidable cause; and (iii) the proprietor of the school and the local authority have failed, after jointly making reasonable enquiries, to ascertain where the pupil is.
9	8(1)(i) - that he is detained in pursuance of a final order made by a court or of an order of recall made by a court or the Secretary of State, that order being for a period of not less than four months, and the proprietor does not have reasonable grounds to believe that the pupil will return to the school at the end of that period.
10	8(1) (j) - that the pupil has died.
11	8(1)(k) - that the pupil will cease to be of compulsory school age before the school next meets and— (i) the relevant person has indicated that the pupil will cease to attend the school; or (ii) the pupil does not meet the academic entry requirements for admission to the school's sixth form.
12	8(1)(l) - in the case of a pupil at a school other than a maintained school, an Academy, a city technology college, or a city college for the technology of the arts, that he has ceased to be a pupil of the school.
13	8(1)(m) - that he has been permanently excluded from the school.
14	8(1)(n) - where the pupil has been admitted to the school to receive nursery education, that he has not on completing such education transferred to a reception, or higher, class at the school.
15	8(1)(o) where— (i) the pupil is a boarder at a maintained school or an Academy; (ii) charges for board and lodging are payable by the parent of the pupil; and (iii) those charges remain unpaid by the pupil's parent at the end of the school term to which they relate.